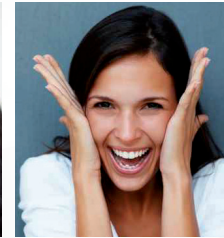
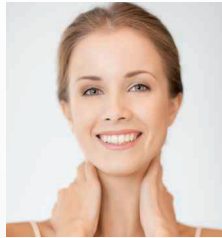


# Types of colours



01

02

03

04

05

06

07

08

09



# PUREBEAU

# COLOUR BASICS



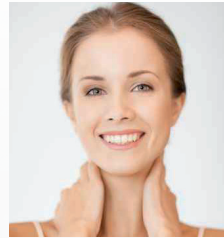
# Types of colour EYEBROW

Gradation



**Hair colour**

light blonde



blonde



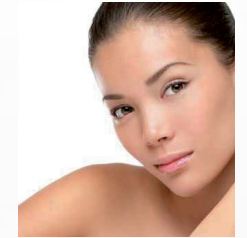
red



brown



dark brown



black

pale

katharina

o8/monroe

timber

004/schlamm

04/schlamm

AB dark/LFoo3



68/whitesatin

walnut

AB hell/LFoo1

005/taupe

petrol

11/hazelnut



o8/monroe

blackgold

antique

antique

11/hazelnut

001/dark brown

dark

walnut

irishstew

003/ebenholz

AB dark/LFoo3

001/dark brown

imoteph

# Corrections of combinations of colour pigments EYEBROWS (brown)

white	yellow	red	black	=	Result	Corrections
	<del></del>		<del></del>	=		base 010 004 petrol 053
	<del></del>	<del></del>		=		007 009 coconut Starke Korrektur 018
<del></del>	<del></del>			=		gold dust 049 katharina 004 schlamm
<del></del>	<del></del>	<del></del>		=		087 007 009 katharina

Solid eyebrow colours 01, 04, 05, 06, 11, 53, walnut, fade to grey, naturblond, petrol, antique, blackgold, irish stew, timber

white 100%	yellow 100%	red 50%	black 100%	.....	green +/-	
------------	-------------	---------	------------	-------	-----------	--

Free colour selection

white 100%	yellow 100%	red 100%	black 100%	.....	Corrector Filter	
					to warm	base, 10
					to cold	coconut, 09, 18

OneTouch (linear colour discharge)

pale 04	11	petrol	AB dark	01	dark imoteph
---------	----	--------	---------	----	--------------



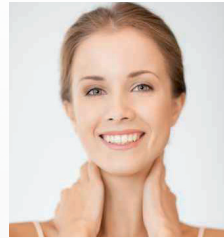
# Types of colour EYELID

Gradation



Hair colour

light blonde



blonde



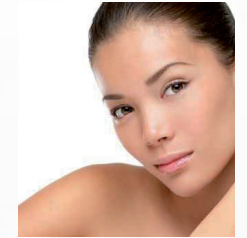
red



brown



dark brown



black

pale

coloured

coloured

renegade

renegade

renegade

imoteph

↓

renegade

renegade

AB dark

AB dark

imoteph

12/turboblack

↓

petrol

12/turboblack

imoteph

imoteph

jetblack

jetblack

dark

imoteph

imoteph

jetblack

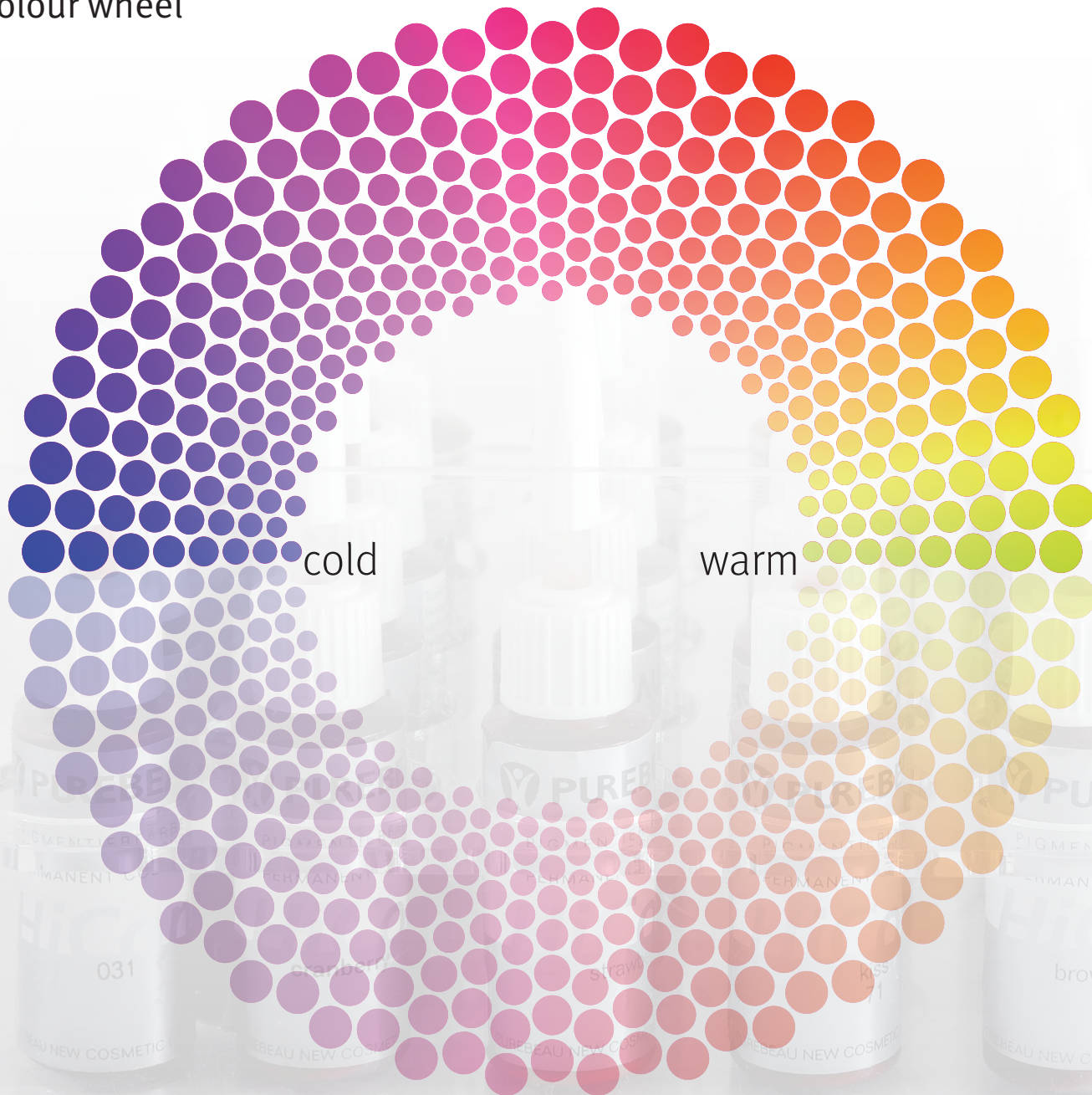
jetblack

orchid black

orchid black

Correction eyelid with blue cast: AB dark/LFoo3

# Colour wheel



## Composites



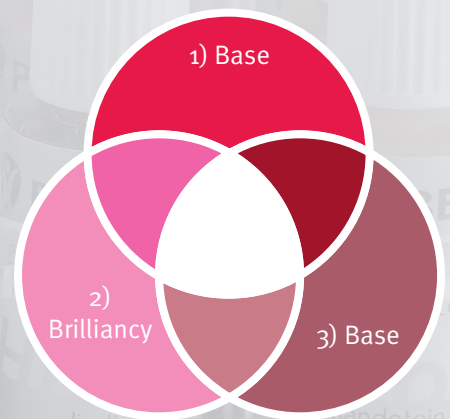
**1** Base colour; organic  
*natural covering*



**2** Brilliancy; organic/mineral  
*Secondary colour, nuances*



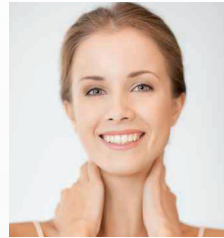
**3** Base colour; mineral  
*matt covering*



# Types of colour LIPS/ base colour organic



Gradation



**Hair colour**

light blonde

blonde

red

brown

dark brown

black

pale

nude

mondial

strawberry

mondial

mondial

mondial

↓

jazz

strawberry

hellsgate

shine

roxy

roxy

↓

desire

roxy

roxy

roxy

26/venezian

21/darbrown red

dark

pales gate

soolaimon

77 sunset

soolaimon

tobago

27/terracotta

**Correction lips with blue cast: mondial/orange**

**Correction lips nude: 25/toskana/hush/creme coffee**

mineral base

# Types of colour LIPS/ base mineral

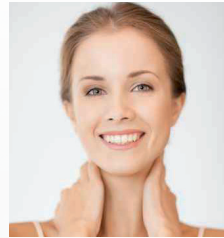


Bases



**Hair colour**

light blonde



blonde



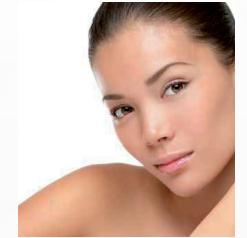
red



brown



dark brown



black

base  
01

sandstein

magma

french kiss

venezian

soolaimon

tobago

**plus brillancy (organic/mineral)**

base  
02

each base colour  
organic or mineral

each base colour  
organic or mineral

each base colour  
organic or mineral

each base colour  
organic or mineral

each base colour  
organic or mineral

each base colour  
organic or mineral

OR

**plus nuance (mineral)**

base  
03

each base colour  
mineral

each base colour  
mineral

each base colour  
mineral

each base colour  
mineral

each base colour  
mineral

each base colour  
mineral

**Nude Look**

pale

skin rose

hush

sandstein

softbronze

toskana

dark

soft toffee,  
cream coffee

031

cranberry

strawberry

kiss  
71

brown sugar

lip liza  
61

sandstein  
18

PUREBEAU NEW COSMETIC



## MAMILLA

nude

pale

base

skin rose

+

Skin 2

light red

stronger

base

skin 3

yellow

base

sara brown

+

Skin 3

red

stronger

base

skin rose

+

skin flash

+

clear lip colours like:  
desire, magma etc.

## NIPPLES

Darker

colour-contrasting

base

skin 3

+

Skin 4

+

Skin dark





**BASE**

**Start**

**natural**

base

base

alabaster

alabaster

+

Skin 5

**VARIATIONS**

+  
redder

+  
red browner

+  
brown

+  
beige

+  
yellow

skin rose

skin 3

sara brown

champagner

sara brown

+

tan

+

acapulco

+

sand

